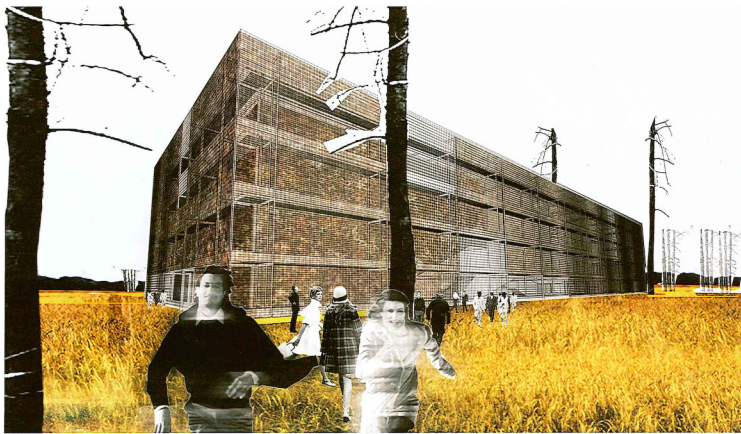


农业大学大会堂，波兹南，波兰

AUDITORIUM CENTER AT THE AGRICULTURAL UNIVERSITY, POZNAŃ, POLAND

设计：medusa 组合事务所

DESIGN：medusa group



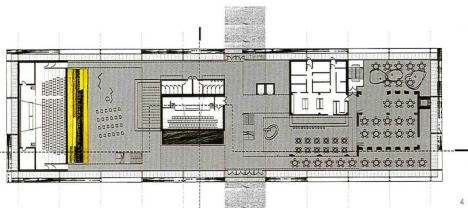
设计时间：2001年（在波兰建筑师协会（SARP）组织的波兹南市农业大学旧锅炉房改造为学术场所的总体规划设计竞赛中获得二等奖）

中心礼堂是由旧锅炉房改造而成，作为大学的学术场所。我们并非重建钢筋混凝土的锅炉房遗址，而是把它当作新综合楼的关键元素。锅炉房的外形没有改变，它作为独立实体系统的一个组成部分。首层包含教室、讲堂、教师办公室和一个自助餐厅。为了合理地利用坚固的钢筋混凝土框架结构，并且保持该建筑的后工业时代特色，一个讲堂布置在自助餐厅的上方，切入大厅的开放空间。环绕建筑周围的绿化是它的第二层表皮，把内部结构统一成为一个整体。建筑的立面并非单一的，它将随四季、气候条件和光线而变化。□



1 透视 / Perspective

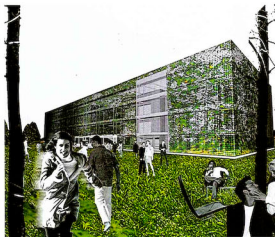
2, 3 立面 / Facade



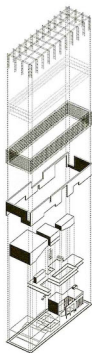
4



5



6



8

Design: 2001 (Second prize in the competition of the Association of Polish Architects (SARP) for a master plan to adapt an old boiler house for the academic purposes at the Agricultural University in Poznań)

The Auditorium Center is an adaptation of an old boiler house for the university's academic purposes. Rather than rebuild the reinforced-concrete remnants of the boiler house, we used it as the key element of the new complex: without any change to its shape, the building was included in the system of independent solids as its integral part, housing classrooms, lecture rooms, teacher

- 4 首层平面 / Ground floor plan
- 5 纵剖面 / Longitudinal section
- 6, 7 透视图 / Perspective
- 8 轴测图 / Axonometric view

rooms, and a cafeteria on the ground floor. To utilize the sturdy reinforced-concrete framework rationally, and to retain the postindustrial character of the building, a lecture room was suspended above the cafeteria, cutting into the open space of the lounge. The greenery, which surrounds the solid of the building, is its second skin and unites the internal structure of the complex into a whole. The elevation is never defined homogeneously: it changes along with the seasons of the year, weather conditions, and lighting.□